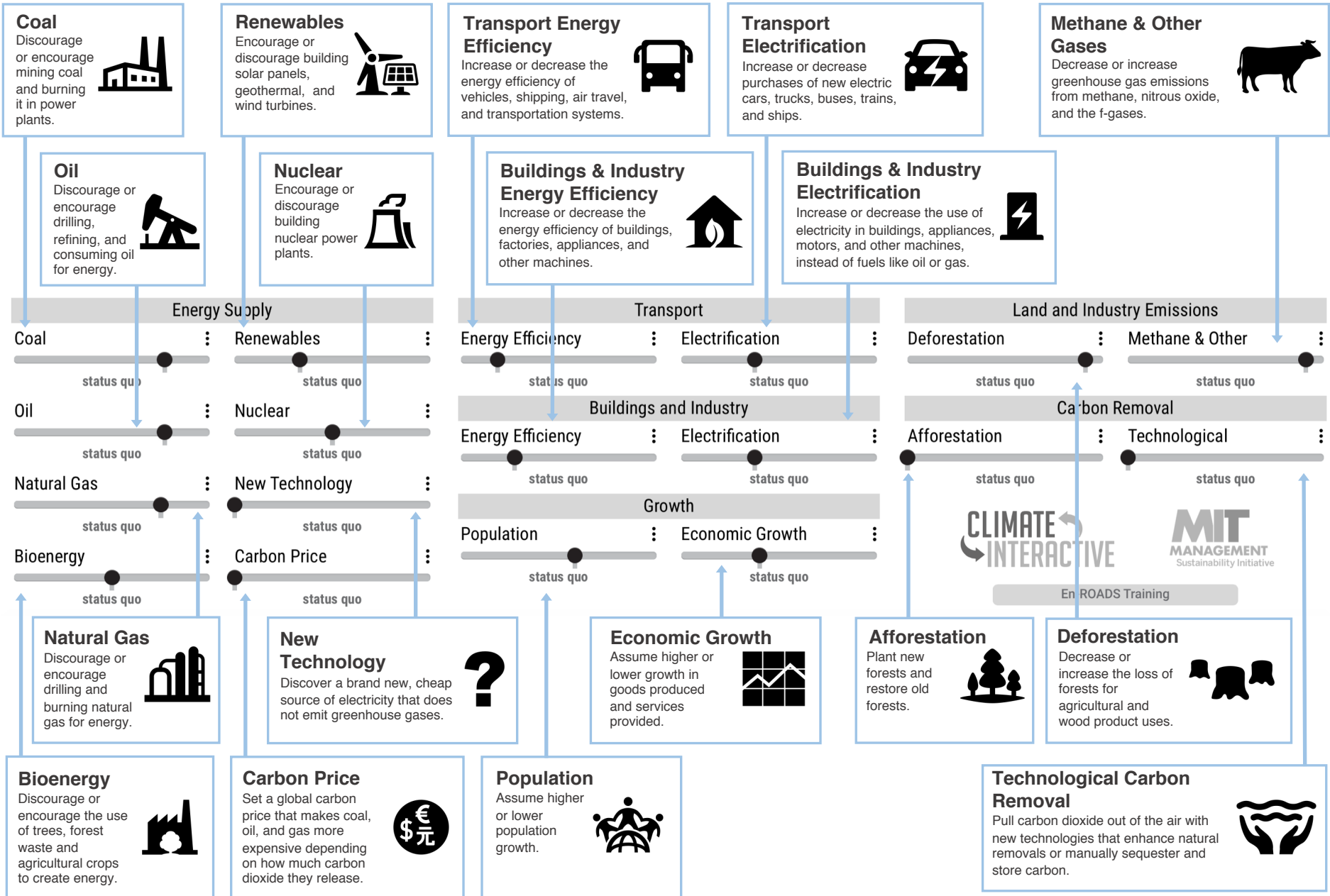


# En-ROADS Control Panel



## Coal

Discourage or encourage mining coal and burning it in power plants.



## Renewables

Encourage or discourage building solar panels, geothermal, and wind turbines.



## Transport Energy Efficiency

Increase or decrease the energy efficiency of vehicles, shipping, air travel, and transportation systems.



## Transport Electrification

Increase or decrease purchases of new electric cars, trucks, buses, trains, and ships.



## Methane & Other Gases

Decrease or increase greenhouse gas emissions from methane, nitrous oxide, and the f-gases.



## Oil

Discourage or encourage drilling, refining, and consuming oil for energy.



## Nuclear

Encourage or discourage building nuclear power plants.



## Buildings & Industry Energy Efficiency

Increase or decrease the energy efficiency of buildings, factories, appliances, and other machines.

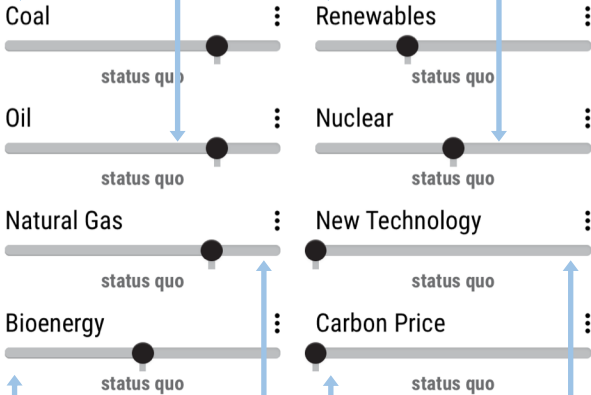


## Buildings & Industry Electrification

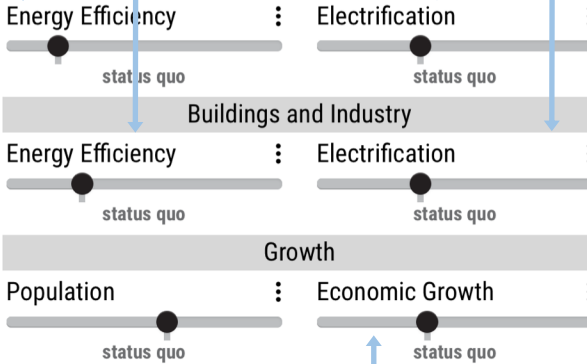
Increase or decrease the use of electricity in buildings, appliances, motors, and other machines, instead of fuels like oil or gas.



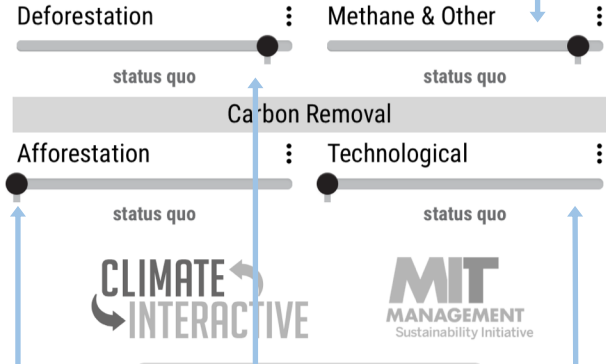
### Energy Supply



### Transport



### Land and Industry Emissions



## Natural Gas

Discourage or encourage drilling and burning natural gas for energy.



## New Technology

Discover a brand new, cheap source of electricity that does not emit greenhouse gases.



## Economic Growth

Assume higher or lower growth in goods produced and services provided.



## Afforestation

Plant new forests and restore old forests.



## Deforestation

Decrease or increase the loss of forests for agricultural and wood product uses.



## Bioenergy

Discourage or encourage the use of trees, forest waste and agricultural crops to create energy.



## Carbon Price

Set a global carbon price that makes coal, oil, and gas more expensive depending on how much carbon dioxide they release.



## Population

Assume higher or lower population growth.



## Technological Carbon Removal

Pull carbon dioxide out of the air with new technologies that enhance natural removals or manually sequester and store carbon.

